



ClassVR Repair Guide

Version 1



A1 - CVR-155A Disassembly and Repair Guide

1.1 - The first step to disassembling the ClassVR headset is to remove the orange front cover. This can be done by applying downward pressure to one side of the orange cover (in the area highlighted in the photo) and pulling away from the rest of the unit. This will cause the cover to move away slightly from the rest of the headset.

Figure 1



Figure 2



1.2 - The back edge can then be lifted and unclipped, this will free one side of the cover.

The same can be repeated on other the side, the front cover can then be removed.

Figure 3



Figure 4



Figure 5



A2 - Battery Removal/Replacement

2.1 - The first step to removing the battery is to unplug the cable connecting it to the main logic board (highlighted in red). This cable is held in place with a hard adhesive and will require a little force to remove, wiggling the connector from side to side helps break the adhesive and puts less strain on the connector.

Figure 6

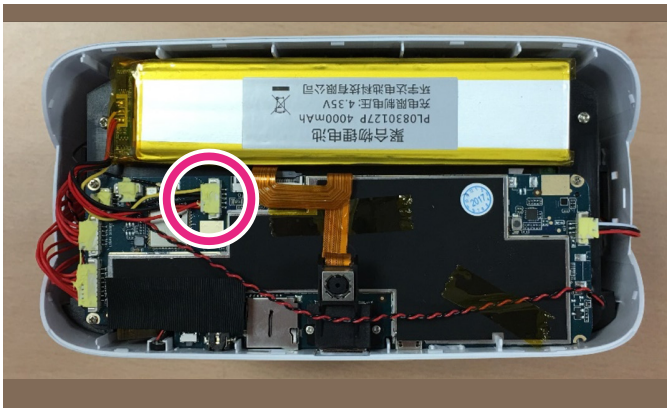


Figure 7

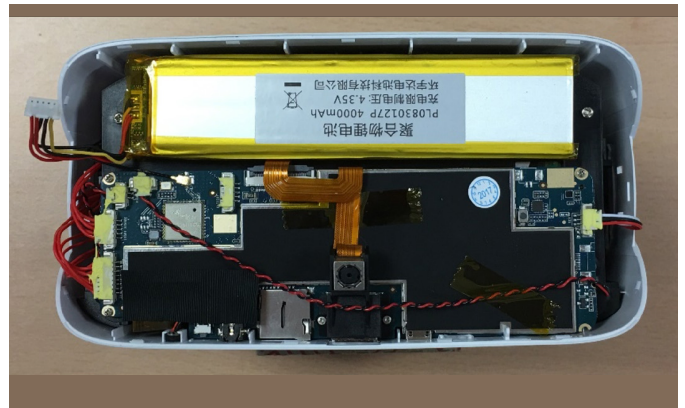


Figure 8



Figure 9

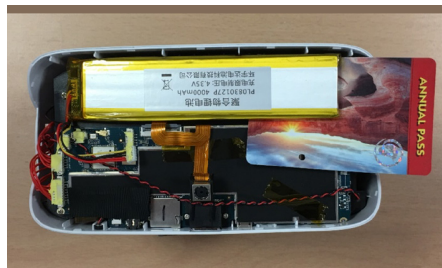
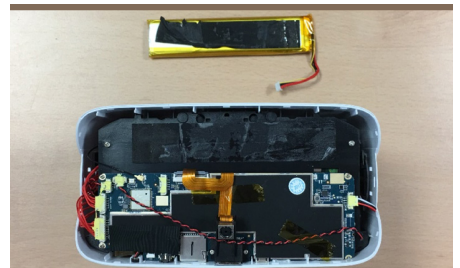


Figure 10



2.2 - The battery is held in place with double sided tape to the black plastic panel behind it. There may also be some tape across the top of the battery in some cases, this should be removed first.

The easiest way to remove the battery is by using a flat pry tool or an old credit card.

Starting on the right side of the battery, (being careful not to damage the ribbon cable connecting the camera), the card can be slid under the battery as shown in the images above.

2.3 - Once the card is under the battery it can be used to lever the battery out from right to left, slowly pushing the card under more of the battery to cut the adhesive. Once most of the battery has been lifted, it becomes easier to pull and remove from the headset by hand.

To reassemble, the battery needs to be stuck back down and plugged in to the main logic board. New tape will have to be used on the battery during reassembly to ensure that the battery does not fall out during use.